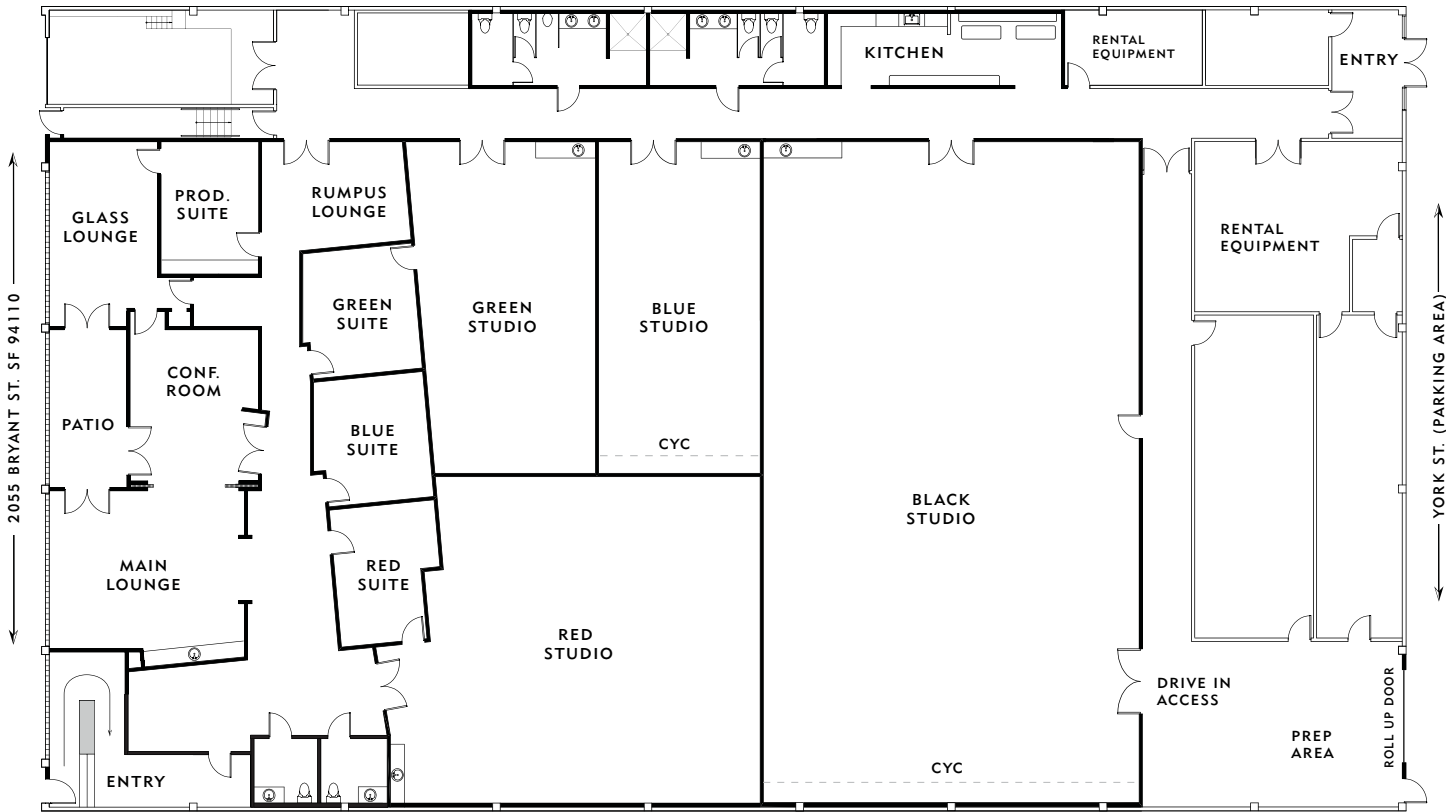




STUDIO RENTAL SPECS



BLUE STUDIO:

900 sq.ft. (22' X 41')
Cyc: white 22'W x 19'D x 18'H
Walls: all white
Height: 18' clear to trusses
Entry: 8' high x 6' wide
Power: 600 amps 3-phase

GREEN STUDIO:

985 sq.ft. (24' X 41')
Floor: concrete (no cyc)
Walls: all white
Height: 18' clear to trusses
Entry: 8' high x 6' wide
Power: 600 amps 3-phase

RED STUDIO:

1,900 sq.ft. (41' X 49')
Floor: concrete (no cyc)
Walls: all white
Height: 18' clear to trusses
Entry: 8' high x 6' wide
Power: 600 amps 3-phase

BLACK STUDIO:

3,800 sq.ft. (47' X 81')
Cyc: white 47'W x 48'D x 18'H
Walls: all white
Height: 18' clear to trusses
Drive-in entry: 8' high x 8' wide
Power: 1200 amps 3-phase
Overhead flats (2): each 20'x40'

ALL STUDIOS INCLUDE:

- White cyc painting prior to first rental day; but **24 hours notice** is required for fresh paint job
- Unlimited power usage
- Use of Wi-Fi and telephone (local & long distance)
- Heat and air conditioning
- Rolling shoot cart & rolling hair/make-up station
- Private stereo system with iPod dock & CD player
- Two to four assigned parking spaces per studio
- Dedicated power panel with 600 amps 3-phase power (Black Studio has 2 panels, 1200 amps total)
- Unobstructed height clearance of 18' in each studio, with up to 26' clearance in many areas
- Kitchenette in each studio with 8' granite countertop, mini fridge, sink, coffee maker, complimentary coffee & water, couch, coffee table
- Reasonable use of common spaces (on a first-come first-served basis; no shooting allowed without prior permission): lounges, conference room, lunch room, patio, kitchen, production room w/ fax, printer, copier, internet computer

PRIVATE SUITE(S):

Blue Suite, Green Suite, or Red Suite: available only in combination with studio rentals
Approx. 15' X 14' each